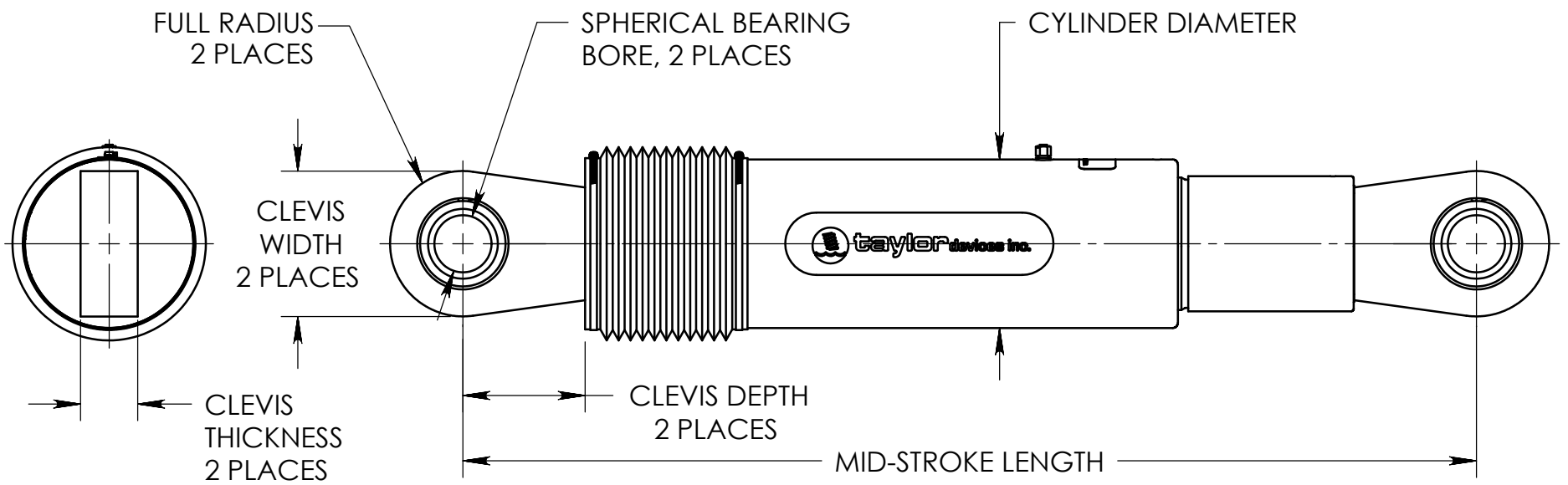




taylor devices inc.

FLUID VISCOUS DAMPERS & LOCK-UP DEVICES



FORCE	SPHERICAL BEARING BORE DIA. (INCHES)	MID-STROKE LENGTH (INCHES)	STROKE (INCHES)	CLEVIS THICKNESS (INCHES)	CLEVIS WIDTH (INCHES)	CLEVIS DEPTH (INCHES)	CYLINDER DIA. (INCHES)	WEIGHT (lbs.)
55 KIP	1.50	34.13	±3	1.63	4 MAX.	3.25	4-1/2 MAX.	90
110 KIP	2.00	42.00	±4	2.13	4-3/4 MAX.	4.00	5-3/4 MAX.	185
165 KIP	2.25	47.00	±4	2.25	6 MAX.	5.10	7-1/4 MAX.	300
220 KIP	2.75	48.75	±4	2.75	7-1/2 MAX.	5.88	8-1/4 MAX.	425
330 KIP	3.00	51.75	±4	3.00	8 MAX.	6.38	9-1/2 MAX.	600
440 KIP	3.50	62.00	±5	3.50	9 MAX.	7.50	11-1/4 MAX.	900
675 KIP	4.00	62.00	±5	4.50	12-3/4 MAX.	8.00	13-3/4 MAX.	1300
900 KIP	5.00	74.00	±5	5.50	12-3/4 MAX.	10.75	16-3/4 MAX.	2650
1450 KIP	6.00	84.00	±5	6.00	13-3/4 MAX.	12.00	20-1/4 MAX.	4100
1800 KIP	7.00	88.25	±5	7.00	16-1/4 MAX.	12.50	22-1/4 MAX.	5500

NOTE: VARIOUS STROKES ARE AVAILABLE, FROM ±2 TO ±36 INCHES. FORCE CAPACITY MAY BE REDUCED FOR STROKE LONGER THAN STROKE LISTED IN TABLE. ANY STROKE CHANGE FROM THE STANDARD STROKE VERSION DEPICTED CHANGES MID-STROKE LENGTH BY FIVE INCHES PER ±1 INCH OF STROKE.

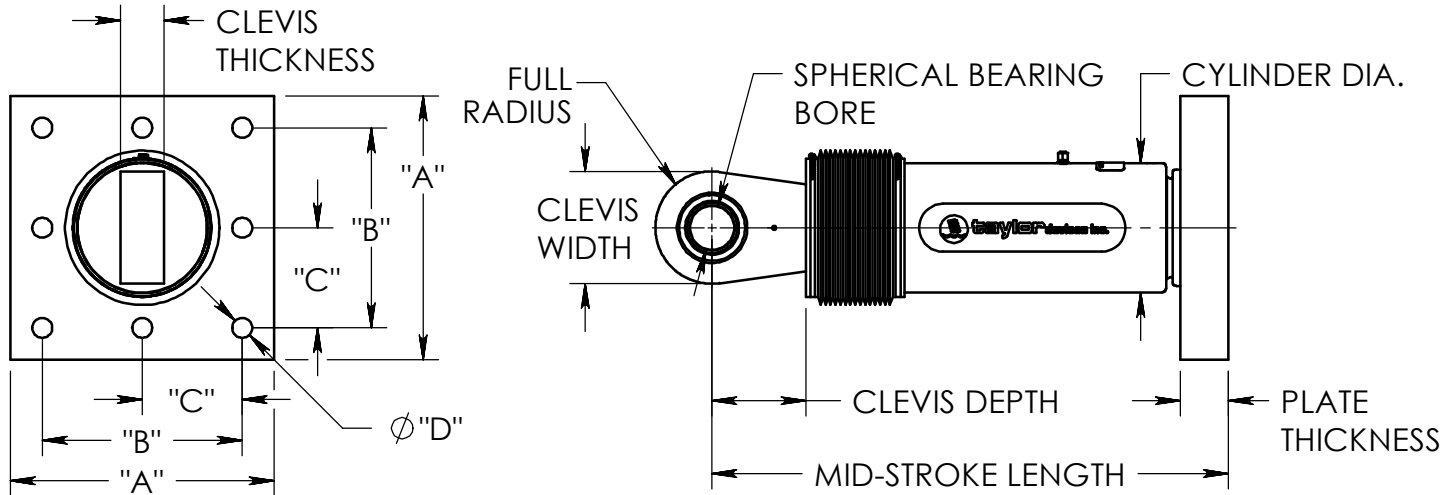
**EXAMPLE: 220 KIP ±4 INCHES STROKE, MID-STROKE LENGTH IS 48.75 INCHES
 220 KIP ±6 INCHES STROKE, 6-4 = 2 TIMES FIVE = 10
 48.75+10 = 58.75 INCHES MID-STROKE LENGTH**

BELLOWS MAY BE REPLACED WITH A STEEL SLEEVE AS DESIRED STROKE LENGTHS INCREASE. CONSULT TAYLOR DEVICES FOR STROKE OVER ± 12 INCHES AND/OR FOR FORCE CAPACITIES FOR STROKE LONGER THAN LISTED IN TABLE.



taylor devices inc.

FLUID VISCOUS DAMPERS & LOCK-UP DEVICES



FORCE	SPHERICAL BEARING BORE DIA. (INCHES)	MID-STROKE LENGTH (INCHES)	STROKE (INCHES)	CLEVIS THICKNESS (INCHES)	CLEVIS WIDTH (INCHES)	CLEVIS DEPTH (INCHES)	CYLINDER DIA. (INCHES)	WEIGHT (lbs.)
55 KIP	1.50	31.00	±3	1.63	4 MAX.	3.25	4-1/2 MAX.	98
110 KIP	2.00	39.25	±4	2.13	5 MAX.	4.00	5-3/4 MAX.	215
165 KIP	2.25	40.00	±4	2.25	6 MAX.	5.10	7-1/4 MAX.	400
220 KIP	2.75	41.25	±4	2.75	7-1/2 MAX.	5.88	8-1/4 MAX.	560
330 KIP	3.00	43.50	±4	3.00	8 MAX.	6.38	9-1/2 MAX.	675
440 KIP	3.50	53.00	±5	3.50	9 MAX.	7.50	11-1/4 MAX.	1000
675 KIP	4.00	56.75	±5	4.50	11-1/4 MAX.	8.00	13-3/4 MAX.	1750
900 KIP	5.00	64.00	±5	5.50	12-3/4 MAX.	10.75	16-3/4 MAX.	2400
1450 KIP	†	†	†	†	†	†	†	†
1800 KIP	†	†	†	†	†	†	†	†

FORCE	"A"	"B"	"C"	"D"	PLATE THICKNESS (INCHES)
55 KIP	7.00±.12	5.00±.01	*	0.81±.01	1.50±.03
110 KIP	11.12±.12	8.00±.01	*	1.25±.01	1.50±.03
165 KIP	13.50±.12	10.00±.01	5.00±.01	1.12±.01	2.40±.03
220 KIP	16.50±.12	12.50±.01	6.25±.01	1.25±.01	3.00±.06
330 KIP	17.00±.12	13.00±.01	6.50±.01	1.375±.010	3.00±.06
440 KIP	18.00±.12	13.50±.01	6.75±.01	1.500±.010	4.00±.06
675 KIP	20.00±.12	16.00±.01	8.00±.01	1.63±.01	4.00±.06
900 KIP	†	†	†	†	†
1450 KIP	†	†	†	†	†
1800 KIP	†	†	†	†	†

NOTE:

VARIOUS STROKES ARE AVAILABLE, FROM ±2 TO ±36 INCHES. FORCE CAPACITY MAY BE REDUCED FOR STROKE LONGER THAN STROKE LISTED IN TABLE. ANY STROKE CHANGE FROM THE STANDARD STROKE VERSION DEPICTED CHANGES MID-STROKE LENGTH BY FIVE INCHES PER ±1 INCH OF STROKE.

EXAMPLE: 220 KIP ±4 INCHES STROKE, MID-STROKE LENGTH IS 41.25 INCHES
 220 KIP ±6 INCHES STROKE,
 6-4 = 2 TIMES FIVE = 10
 41.25+10 = 51.25 INCHES MID-STROKE LENGTH

BELLOWS MAY BE REPLACED WITH A STEEL SLEEVE AS DESIRED STROKE LENGTHS INCREASE. CONSULT TAYLOR DEVICES FOR STROKE OVER ± 12 INCHES AND/OR FOR FORCE CAPACITIES FOR STROKE LONGER THAN LISTED IN TABLE.

* DENOTES 4-BOLT MOUNTING PATTERN

† DENOTES CUSTOM PATTERN. CONSULT FACTORY.