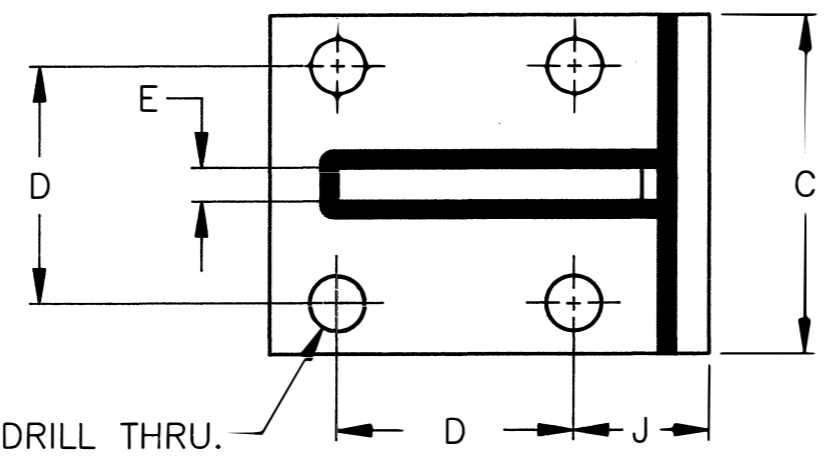
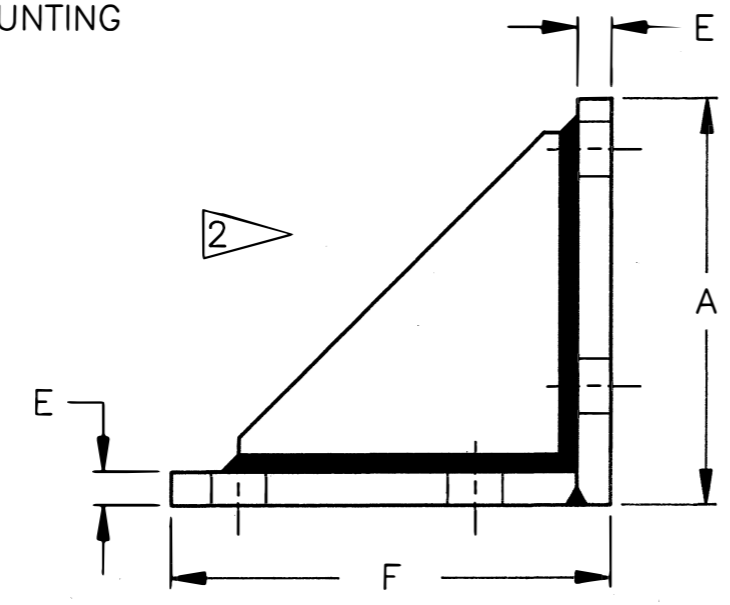


| REVISIONS | | | |
|-----------|-------------|------|----------|
| REV. | DESCRIPTION | DATE | APPROVED |

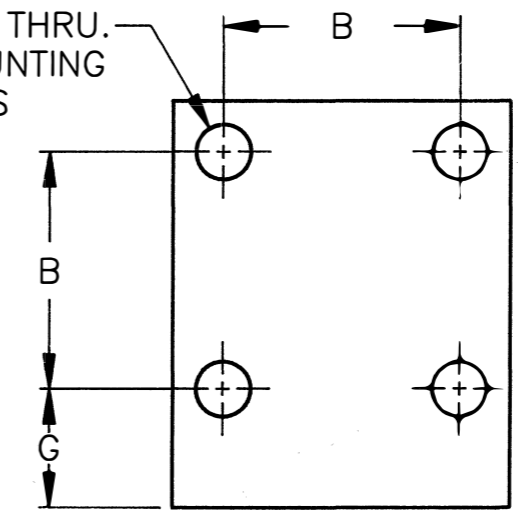


3 H DIAMETER DRILL THRU. 4 HOLES FOR MOUNTING



2

H DIAMETER DRILL THRU. 4 HOLES FOR MOUNTING W-SERIES BUFFERS



| TAYLOR DEVICES PART NUMBER | MODEL | A | B | C | D | E | F | G | H | J |
|----------------------------|------------|-------|-------|-------|-------|-----|-------|-------|--------|-------|
| 67DP-15315-01 | 2-1/2 X 3W | 6 | 3-1/2 | 5 | 3-1/2 | 1/2 | 6-1/2 | 1-3/4 | 13/16 | 2-1/4 |
| 67DP-15315-01 | 3 X 4W | 6 | 3-1/2 | 5 | 3-1/2 | 1/2 | 6-1/2 | 1-3/4 | 13/16 | 2-1/4 |
| 67DP-15316-01 | 4 X 6W | 7 | 4 | 6 | 4 | 3/4 | 7-3/4 | 2 | 13/16 | 2-3/4 |
| 67DP-15317-01 | 5 X 8W | 8-3/4 | 5-3/4 | 7-3/4 | 5-3/4 | 3/4 | 9-1/2 | 2 | 15/16 | 2-3/4 |
| 67DP-15318-01 | 6 X 8W | 10 | 7 | 9 | 7 | 1 | 11 | 2 | 15/16 | 3 |
| 67DP-15319-01 | 6 X 14W | 13 | 9 | 12 | 9 | 1 | 14 | 2-1/2 | 1-9/16 | 3-1/2 |
| 67DP-15319-01 | 7 X 10W | 13 | 9 | 12 | 9 | 1 | 14 | 2-1/2 | 1-9/16 | 3-1/2 |

3 MOUNTING BOLTS NOT TO BE LOADED IN SHEAR. ADAPTER MOUNTS TO BE SUPPORTED BY WELDED SHEAR KEYS OF ADEQUATE SIZE FOR EACH APPLICATION PER AISE STANDARDS.

2 TO BE MOUNTED IN POSITION SHOWN.

1.) ADAPTER MOUNTS TO BE MANUFACTURED FROM STRUCTURAL STEEL PLATE PER ASTM A-36 OR EQUIVALENT. WELDS TO BE 1/2 E IN SIZE AND SHALL ADHERE TO GOOD WELDING STANDARDS.

NOTES: UNLESS OTHERWISE NOTED.

INTERPRET DWG. DIMENSIONS PER ANSI Y14.5

| | | | | | | |
|---|---|----------|---------|-------|---|---|
| UNLESS OTHERWISE SPECIFIED DIMENSIONS ARE IN INCHES. TOLERANCES, ANGLES ± 2° .XX ±.01 .XXX ±.002 .XXXX ±.0002 ALL SHARP CORNERS & EDGES TO BE R.01-.02 ✓ MAX. ALL SURFACES | PREPARED | K.VARNEY | 93/6/18 | | NORTH TONAWANDA, N.Y. PHONE 716-694-0800 FAX 716-695-6015 | |
| | B/P COPY NO. B/P SUBJECT TO RECALL: B/P & SUBJECT MATTER PROPERTY TAYLOR COMPANIES. REPRODUCTION B/P OR SUBJECT MATTER PROHIBITED. | CHECKED | | | | SIDE MOUNT ADAPTER FOR W-SERIES BUFFERS |
| PATENTS } Pending Applied For Copyright 1956 Form 5E | ENGINEER | | | SIZE | CAGE CODE | DRAWING NO. |
| | APPROVED | | 93/5/16 | B | 06742 | 67DP-1531X-01 |
| | MATERIAL | | | SCALE | N.T.S. | SHEET 1 OF 1 |