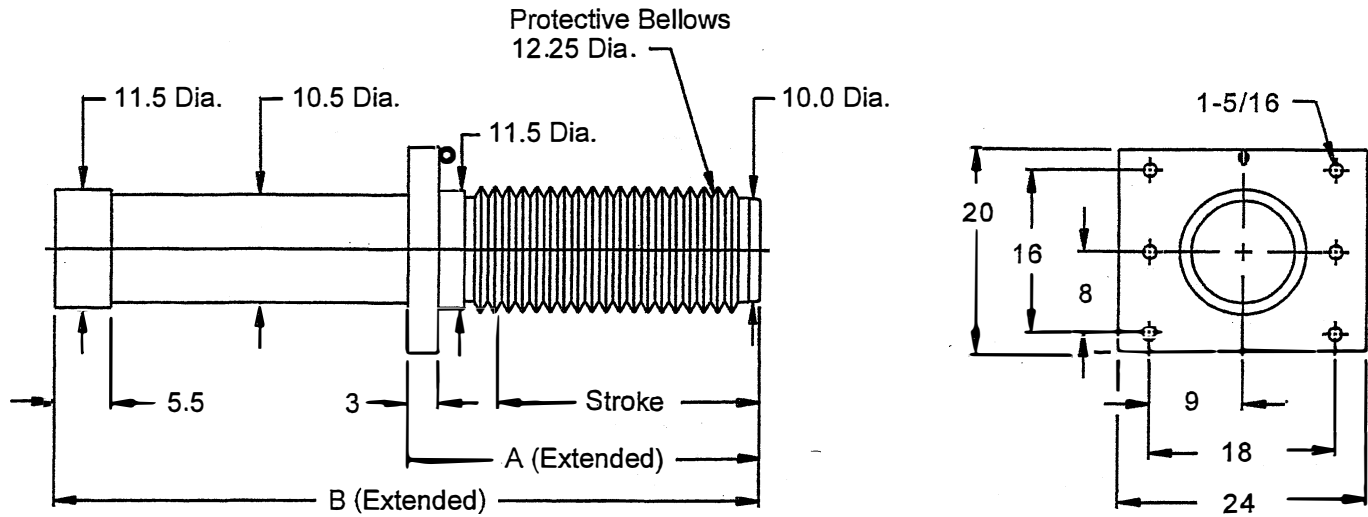


# FRONT FLANGE MOUNT O.B. SERIES HYDRAULIC CRANE BUFFERS

**HEAVY DUTY/HIGH CAPACITY/LOWEST DECELERATIONS**



ALL DIMENSIONS = INCHES

## ENGINEERING DATA:

MODEL	MAX FORCE (lbs.)	MAX CAPACITY (in-lbs.)	WEIGHT (lbs.)	STROKE (in.)	A (in.)	B (in.)
7½ x 22	200,000	3,960,000	1,000	22	34.5	69
7½ x 26	200,000	4,680,000	1,100	26	38.5	80
7½ x 30	200,000	5,400,000	1,200	30	42.5	89
7½ x 36	200,000	6,480,000	1,400	36	48.5	101
7½ x 42	200,000	7,560,000	1,600	42	54.5	115

## SPECIFICATIONS:

1. These compact buffers are designed for use on high capacity applications such as portal cranes, ore trolleys, etc. The overall lengths of the O.B. style buffers is up to 4 feet less than competitive designs, allowing ease in mounting.
2. All O.B. series buffers include solid stainless steel piston rods, non-flammable fluid that never needs replacement, and the exclusive Taylor Devices guided-cartridge design with non-exposed piston rod.
3. All O.B. series buffers include protective bellows and full drive down capability for use of the buffer stroke as approach on cranes, cars and similar applications.



90 Taylor Drive  
North Tonawanda, NY 14120  
Phone: 716-694-0800  
[www.taylordevices.com](http://www.taylordevices.com)