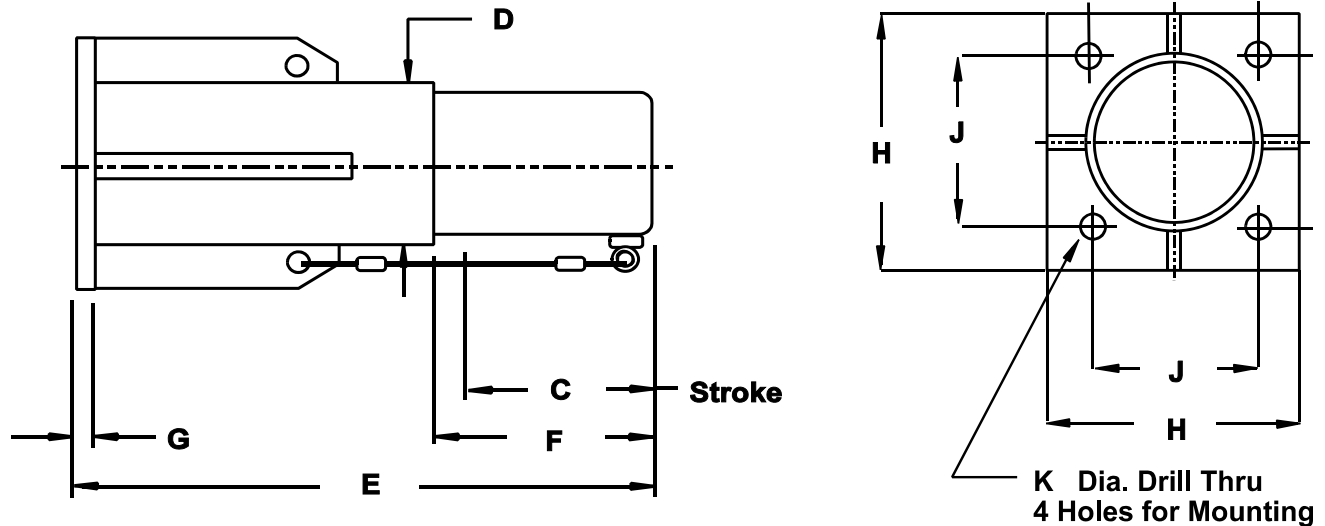


W-SERIES SELF-ADJUSTING CRANE BUFFERS

Specifications: W-Series Self-Adjusting W-I-D-E Range Crane and Mill Buffers
 The “Ultimate Shock” from Taylor Devices, Inc.



A	B	C	D	E	F	G	H	J	K	
Model	Mounting Strength Required (lbs.)	Stroke (in.)	Inches	Inches	Inches	Inches	Inches	Inches	Inches	Weight (lbs.)
1-1/2 x 3 W *	9,000	3	1-7/8	12-1/2	4-3/16	1/2	4	2-3/4	9/16	10
2 x 3 W *	15,000	3	2-1/8	12-1/2	4-1/2	1/2	4	2-3/4	9/16	12
2-1/2 x 3 W	22,000	3	2-1/2	13	5	1/2	5	3-1/2	13/16	15
3 x 4 W	35,000	4	3	16-1/2	6-1/2	1/2	5	3-1/2	13/16	30
4 x 6 W	60,000	6	4	23	8-1/4	3/4	6	4	13/16	60
5 x 8 W	85,000	8	5	31	11	3/4	7-3/4	5-3/4	15/16	110
6 x 8 W	165,000	8	6	33	11	1	9	7	15/16	170
6 x 14 W *	165,000	14	6	51	17	1	12	9	1-9/16	250
7 x 10 W	225,000	10	7	41	13	1	12	9	1-9/16	280
7 x 16 W *	225,000	16	7	58	19	1	14	11	1-5/8	380

* Consult factory for proper application of these models

Application / Design Features:

1. Typical uses include overhead crane buffers, car stops, elevator buffers, and end-of-travel stops on large machinery and material handling equipment.
2. No maintenance, refilling, or adjusting required. The buffer will automatically adjust itself to absorb any impact within its capacity diagram.
3. All buffers include Full Drive Down package for use of buffer stroke as crane approach. Protective rubber bellows also available as an option for foundry or melt shop service, or where severe dirt or ice is present.
4. All buffers are as shown above, except Models 1-1/2 x 3 W, 2 x 3 W and 2-1/2 x 3 W which have no support gussets. Wire rope safety cables are included as a delete option on all sizes to meet OSHA requirements for overhead cranes. All buffers are rated for -40 degrees F to +160 degrees F continuous duty.
5. Solid stainless steel piston rod, hard chrome plated cylinder, and painted mounting standard on all models. All models have one piece cylinders, machined from billet stock.

CAPACITY DIAGRAM W-series CRANE BUFFERS

